

Company
name

Sue Mokka Co., Ltd.

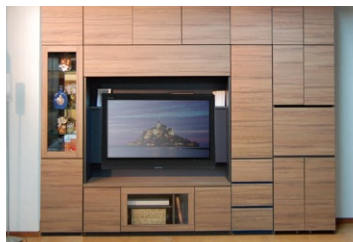
244-1, Yaide, Tsuyama City, Okayama Prefecture, 708-0861 Japan

Website: <http://www.suemokko.co.jp>

Tel: +81-868-23-4481

Fax: +81-868-23-4483

Email: suemokko@suemokko.co.jp



President
Kenji Sue

The furniture manufacturer Sue Mokka has a history of seventy years since its establishment. Under our mottoes "Employees are great assets to the company" and "We contribute to the society by producing such products as customers would be pleased with," we are trying to make a lively workplace and are making all-out efforts, and so we are making great advances in business with the idea of "contributing to the society and achieving success." At present, not only the furniture division but also the RIM division which does an integrated production of large plastic moldings, are active in a wide range of fields. In both divisions, young workers are positively tackling objectives together with experienced workers.

Products and Services

Furniture division:

We develop, design and manufacture cupboards, cabinets, wardrobes, and customized furniture, focusing on semi-customized and customizable wall-storage furniture, and put them on display at furniture shops all over Japan. Further, we also manufacture customized furniture made of such local timber as Japanese cypress from the Mimasaka area and Japanese cedar, for schools and other public facilities.

RIM (reaction injection molding) division:

Using the new material DCPD (dicyclopentadiene), we conduct an integrated production - molding (including large molding), secondary processing, and painting - for "pipe joiners" and exterior parts for construction, farming, and mowing machines.

Equipment and facilities



Equipment and facilities
New workers will learn our cutting and molding processes using specialized machines.

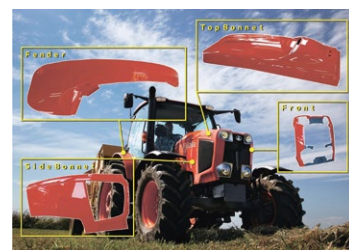
It is advantageous that we do all production processes in Japan, guaranteeing quality, quick delivery, and quick response.

Company Information

Industry:	Manufacture of furniture and fixtures
Head Office:	244-1, Yaide, Tsuyama City, Okayama Prefecture, 708-0861 Japan
Established:	1952
Capital:	10 million yen
Annual sales:	1 billion 630 million yen
President:	Kenji Sue
Number of employees:	92
	Headquarters (Furniture division) Second Factory (RIM division) Kanto office (Tokyo area)

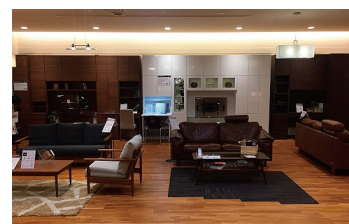
Overseas business

In the RIM division, which started the molding of special plastic materials, we deliver all products to the Japanese markets, and we also mold, secondarily process and paint such products to overseas markets as big tractor parts and farming machine parts in our integrated production system.



Company PR

We develop and produce furniture, paying attention to ever-changing lifestyles and market situations, then put them on display at furniture shops all over Japan. As our products are used every day by end users, we often hear how satisfied they are and what they feel, which uplift and encourage us to follow our mottoes "We contribute to the society by producing such products as customers would be pleased with" and "Contribute to the society and achieve success."



Recruitment history

Chiba Institute of Technology, Kansei Gakuin University, Kibi International University, Hiroshima Institute of Technology, National Institute of Technology (Tsuyama College), Hida International College of Industrial Arts, Musashino Art University Junior College of Art and Design, Kyoto Saga University of Arts, Osaka Electro-Communication University, Mimasaka Junior College, Sakuyo Junior College, Kyoto Technical College, Kobe Denshi Technical College, Okayama Hokubu Technical College, Tsuyama Technical High School, Tsuyama Commercial High School, Mimasaka High School, Katsumada High School, Sakuyo High School, Tsuyama Higashi High School.

Ideal applicants

A person who:
Has a cheerful, supple and positive mind,
Loves making things, and
Is imaginative and creative in constant pursuit of improvement.
We have a cheerful workplace and there both seniors and juniors join forces to work on objectives every day.

Message to applicants

In the active and pleasant workplace, young workers are seen here and there. Also, we have been striving to make a good work environment for both men and women, so we have many women in the company, including in the factory. Would not you join us and make an effort at work together?